

云南梢小卷蛾属二新种

(鳞翅目: 卷蛾科)

刘友樵 白九维

(中国科学院动物研究所)

专门有害松树嫩梢的钻蛀性害虫梢小卷蛾属 *Rhyacionia* Hb. 在我国已知有四种¹⁾, 它们是: 夏梢小卷蛾 *R. duplana* (Hb.), 松梢小卷蛾 *R. pinicolana* (Dbl.), 马尾松梢小卷蛾 *R. dativa* Hein. 和云南松梢小卷蛾 *R. insulariana* Liu. 1982 年在全国森林病虫害普查时, 在云南会泽和云南宜良发现梢小卷蛾二新种。现分述如下;

长梢小卷蛾 *Rhyacionia dolichotubula*, 新种 (图 2,5)

♀ 体长: 12 毫米; 翅展: 26 毫米。

头顶有灰褐色丛毛。触角亦呈灰褐色。下唇须前伸, 赤褐色, 第二节膨大, 末端尖, 略向下垂。前翅赤褐色, 有银白色云状斑; 后翅暗灰褐色。胸部腹面银白色, 足赤褐色。腹部灰褐色。

雌性外生殖器: 产卵瓣呈狭长形; 前表皮突 (anterior apophysis) 略长过后表皮突 (posterior apophysis); 交配孔呈长椭圆形, 两侧各有一长半圆形几丁质化腔; 导管端片 (antrum) 呈粗长而略弯曲的管; 囊突 (signum) 两枚、呈尖扁刺突。

本种雌性外生殖器与松梢小卷蛾、马尾松梢小卷蛾、云南松梢小卷蛾相近以, 但其导管端片较它们长过一倍有余。

正模(♀): 云南省宜良县小白龙(2,160米), 1982-VII-27, 玻片号林 83—013。

细梢小卷蛾 *Rhyacionia leptotubula*, 新种 (图 1,3,4)

体长: 6 毫米; 翅展: 17 毫米。

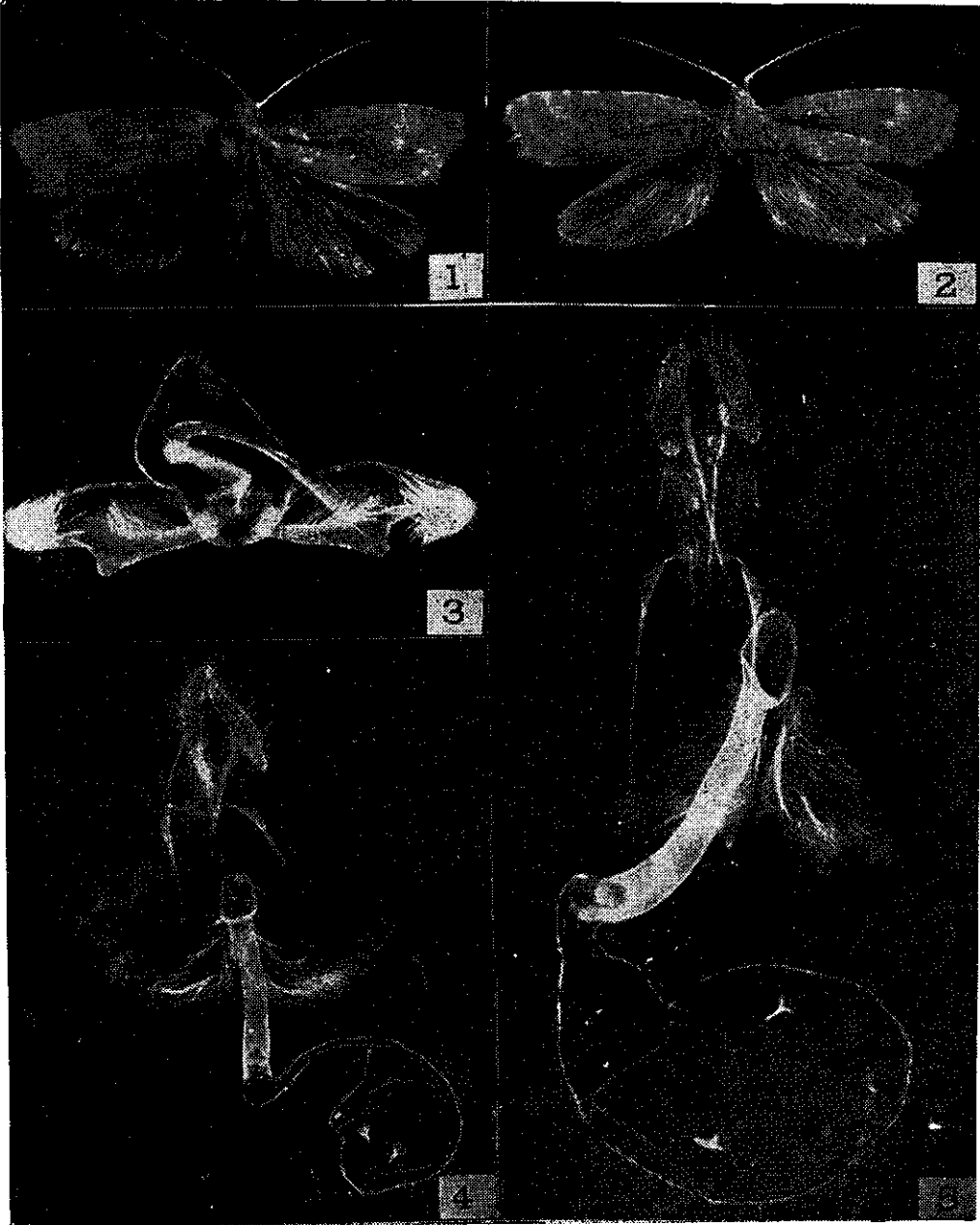
头顶有赤褐色丛毛。触角深褐色、有白环。下唇须前伸; 外侧赤褐色, 内侧发白; 第二节膨大; 末端尖而下垂。前翅赤褐色, 有灰白色云状斑; 后翅暗灰褐色。胸、腹部深褐色。

雄性外生殖器爪状突(uncus)、尾突(socii)、颚形突(gnathos)都退化或不发达。抱器瓣(valva)有较明显颈部, 在抱器腹 1/2 以远处有明显凸突; 抱器端较短、密生有毛丛; 阳茎细长, 无阳茎针。雌性外生殖器交配孔长椭圆形; 两侧有半圆形几丁质化腔; 导管

¹⁾ 刘友樵、白九维, 1981. 中国梢小卷蛾属研究, 昆虫分类学报 3(2): 99—102.

端片细长而直；囊突两枚，呈尖扁刺突。

本种与松梢小卷蛾相近似，但身体较小，雄性抱器腹在 1/2 以远处有明显凸突，雌



长梢小卷蛾 *R. dolichotubula*, sp. n.

2. 成虫；5. 雌性外生殖器。

细梢小卷蛾 *R. leptotubula*, sp. n.

1. 成虫；3. 雄性外生殖器；4. 雌性外生殖器。

性导管端片细长而直是两者明显区别。

正模(♀): 云南省会泽县野马(2,800米), 1982-V-29。配模(♂)及副模(1♂, 6♀♀)的采集地点、海拔和采集日期与正模同。

模式标本存放在中国科学院动物研究所昆虫标本馆。

TWO NEW SPECIES OF PINE TIP MOTHS IN YUNNAN, CHINA

(Lepidoptera: Tortricidae)

Liu Youqiao Bai Jiuwei

(Institute of Zoology, Academia Sinica)

Rhyacionia larvae boring only into the buds of pines. There are four species of *Rhyacionia* already known in China¹⁾, namely: *R. duplana* (Hb.), *R. pinicolana* (Dbl.), *R. dativa* Hein. and *R. insulariana* Liu. Through a survey of forest pests in our country, 1982, we discovered two species of *Rhyacionia* in Yunnan province as new to science. All the type specimens are preserved in the Institute of Zoology, Academia Sinica, Beijing, China.

Rhyacionia dolichotubula, sp. n. (figs. 2, 5.)

♀ Body length: 12 mm. Wing expanse: 26 mm.

Entire fore wing reddish brown; transverse markings in the form of irregular, sharply contrasting silver white bars. Ovipositor flattened, narrow; anterior apophysis longer than posterior apophysis; ostium oblong, set at either side with half rounded, chitinized cavity; antrum long, slightly curved and thickened; bursa with two pilate signa, scobinate.

The female genitalia of *dolichotubula* are nearest to those of *dativa*, *pinicolana* and *insulariana*, but differ from the latter chiefly by twice the length of the antrum.

Holotype (♀): Yunnan Province, Yiliang County (2,160 m), 27-VII-1982. Slide No. L-83013.

1) Liu Youqiao & Bai Jiuwei 1981. A Study of Chinese *Rhyacionia* Hübner, 1825. (Lepidoptera: Tortricidae) Entomotaxonomia 3 (2): 99-102.

***Rhyacionia leptotubula*, sp. n. (figs. 1, 3, 4.)**

Body length: 6 mm. Wing expanse: 17 mm.

Vertex with reddish-brown tufts; antenna dark brown with whitish annulations; labial palp porrected. Fore wing reddish-brown; transverse markings in the form of irregular white bars. Uncus absent; socii rudimentary; gnathos not distinguishable. Valva narrow; sacculus protruded beyond the middle; cucullus small, short, with dense tufts; aedeagus long, without cornuti. Female genitalia with wide ostium, set at either side with a half-rounded, chitinized cavity; antrum slender and thickened; bursa with two pilleate signa, scobinate.

This species is very closely similar to *R. pinicolana*, but differs from the latter by the smaller body, sacculus with protruded portion beyond the middle and slender antrum.

Holotype (♀), Allotype (♂) and Paratype (1 ♂, 6 ♀♀): Yunnan Province, Huize County (2,800 m), 29-V-1982.